

Absolute Auction

No Minimum, No Reserve

**1102 Park De Ville Pl.
Columbia, MO**

**Monday, October 13
12:00 PM**



- **Attention: Retirees, Professionals, Investors**
- **Ground Level Condo In Great Location!**
 - **2 Bedroom, 2 Full Baths**
- **Large Living Room With Fireplace – Eat-in Kitchen**
 - **Large Screened In Porch**

Directions: From Stadium Blvd. & W. Worley St., Go West on Worley St. 6/10 mile To Right On Park De Ville Place (Watch for Signs)!

Terms: \$5,000.00 Down Day Of Auction. Remaining Balance Due Within 30 Days Or Sooner. A 4% Buyer's Fee Applies To The Final Bid. Public & Realtor Participation Is Welcomed! Realtors Must Have Clients Pre-Registered By Oct. 11 @ 12:00 p.m., No Exceptions.

"WE MAKE BUYING AND SELLING AT AUCTION EASY"



Atterberry
Auction & Realty Co., LLC.
573-474-9295 www.atterberryauction.com

MEMBERS
MPAA NAA
MarkNet ALLIANCE

PROPERTY INFORMATION

Living Room: 16' x 21' (Irregular Measurement) - Fireplace, Carpet, Lighted Ceiling Fan & French Door Leading To Screened In Porch

Kitchen: 10' x 11'6 (Measurement Includes Counter & Bar Area)– GE Electric Range, GE Refrigerator, Newer Built-In Kenmore Dishwasher, GE Built-In Digital Microwave, Washer, Dryer, Oak Cabinets, Track Lighting, Vinyl Floor, & Lighted Ceiling Fan,

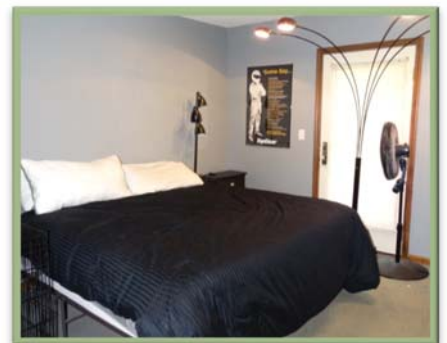
Bathroom: 4' x 8' (Irregular Measurement) - Tub/Shower Combination, Oak Vanity with Sink, & Vinyl Floor

Master Bedroom: 11'6 X 12'5 –Walk-In Closet (5'5 x 5'6), Carpet, Walk Door Leading To Covered Side Porch

Master Bathroom: 5'6 x 6' + 2' x 3' (Irregular Measurement) – Oak Vanity with Sink, Shower, & Vinyl Floor

Bedroom: 11'4 x 12'5 – Walk-In Closet (5'5 x 5'5), Carpet, & Walk Door Leading To Screened In Patio

Screened In Porch: 7'7 x 15'



GENERAL INFORMATION

Schools: Mary Paxton Keeley Elementary, Smithton Middle, & Hickman High

Zoning: R-3, As Per City Of Columbia

2013 Taxes: \$848.33, As Per Boone County Collector

Year Built: 1988, As Per Boone County Assessor

Square Footage: 1,060 Sq. Ft., As Per Boone County Assessor

Land Lease: \$60.00 Monthly

Association Dues: \$86.00 Monthly

Parcel #: 16-218-00-02-164.00 01

Legal Description: Condominium Unit 1102 Of Park De Ville Place Condominiums Plat 15 As Shown By The Declaration Of Condominium, By-Laws And Indenture Of Park De Ville Place Condominiums, A Condominium, Plat 15, Recorded August 23, 1988 In Book 690, Page 511, Records Of Boone County, Missouri.

Utilities

City Of Columbia (Electric, Water, Sewer & Trash): \$80.00 – 12 mo. avg.

Ameren UE (Gas): \$33.00 – 12 mo. avg.

Heating & Cooling: Bryant Natural Gas Furnace & Central Air. 30 Gallon Natural Gas Hot Water Heater



Auction Disclaimer: Purchaser And / Or Purchaser's Agent / Broker Shall Bear The Responsibility To Confirm All Calculations Prior To The Auction. All Information Contained In This Brochure Was Derived From Sources Believed To Be Correct But Is Not Guaranteed. Property Sells "AS-IS" With No Warranties Made By Seller Or Auction Company. Announcements Day Of Auction Take Priority Over All Advertising.