

# Boone County, Missouri

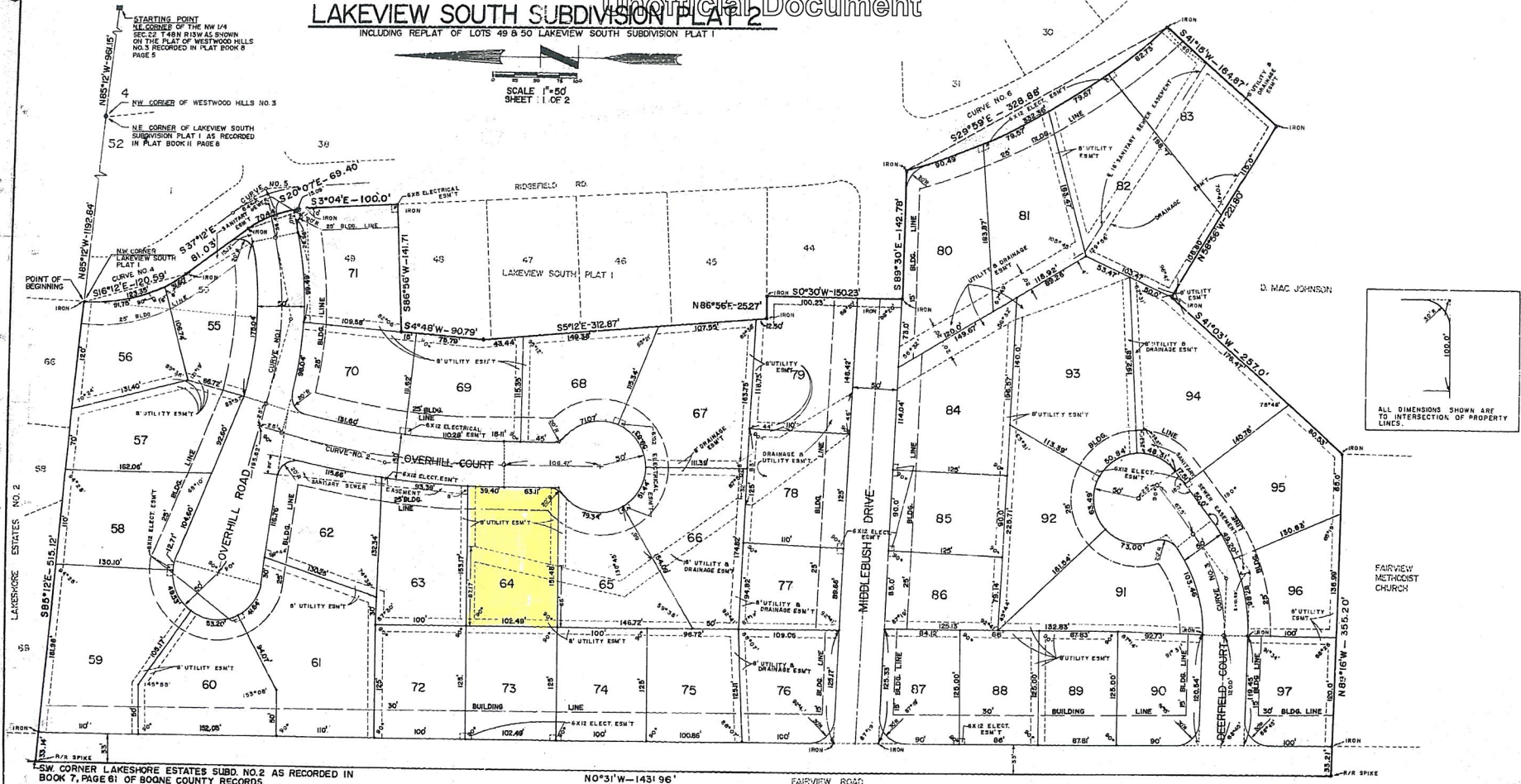
## LAKEVIEW SOUTH SUBDIVISION PLAT 2

INCLUDING REPLAT OF LOTS 49 & 50 LAKEVIEW SOUTH SUBDIVISION PLAT 1

Unofficial Document

Map 1 based on October 12, 1939, 9:40 A.M. in Boone Co. Mo.  
 9446 recorded in Book 11, page 32. See Record, Boone Co.

SCALE 1"=50'  
 SHEET 1 OF 2



ALL DIMENSIONS SHOWN ARE TO INTERSECTION OF PROPERTY LINES.

SW CORNER LAKESHORE ESTATES SUBD. NO. 2 AS RECORDED IN BOOK 7, PAGE 61 OF BOONE COUNTY RECORDS.

N0°31'W-1431.96'

FAIRVIEW ROAD

CURVE NO. 1	CURVE NO. 2	CURVE NO. 3	CURVE NO. 4	CURVE NO. 5	CURVE NO. 6
Δ=26°06'	Δ=14°54'	Δ=38°29'	Δ=42°	Δ=34°08'	Δ=45°41'
D=14'	D=6'	D=32'	D=40'	D=30'	D=9'
R=409.26'	R=95.43'	R=79.05'	R=143.24'	R=143.24'	R=636.63'
L=186.43'	L=248.33'	L=120.26'	L=105.00'	L=85.33'	L=507.37'
T=94.86'	T=124.87'	T=62.5'	T=54.99'	T=43.98'	T=268.15'

James V. Patchett, M.E.S. 1111

Nora Dietzel, Recorder of Deeds

Prepared by CONSOLIDATED CONSULTANTS CORPORATION-1820 BUS LOOP TO WEST COLLEGE, ST. LOUIS, MO.

DATE SUBMITTED 9-17-75